



# CLEANING PRODUCTS

2020

 [www.tedcleaning.com](http://www.tedcleaning.com)

 [info@tedcleaning.com](mailto:info@tedcleaning.com)

 +44 7786 003125

---

# Contents



**3-6**

**Basic  
Cleaner**

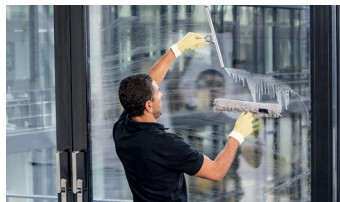
**7-9**



**10-11**

**12-13 Daily Routine  
Cleaner**

**14**



**15 Grease  
Remover**

---



## ULTIMATE 212

### Fields of Application



- All water-resistant surfaces e.g. plastic surfaces, glass surfaces, doors, window frames and heaters
- Water-resistant floor coverings
- Water-resistant materials
- Can be used on sealed wooden floors, safety tiles, porcelain stoneware tiles and ceramic tiles, brass, copper and most plastic surfaces

### Technical Data



- pH-Wert: pH 8 + 0,5
- Product colour: blue
- Container:
  - 1 L bottle
  - 5 L canister
  - 10 L canister
  - 200 L Fa55
  - 40 ml layflat tubing

### Application and Dosage



- Daily routine cleaning: 20-50 ml/10 L water
- Spray cleaning 50 ml/500 ml water

### Product Advantages-Properties



- Neutral multi-purpose cleaner with fresh citrus scent
- Material-compatible
- Good cleaning effect
- Dries quickly without streaks
- Ideal for shiny surfaces
- Leaves brilliant shine
- Removes soiling from pencils, felt tips, ballpoint pens and tracing paper



- Always use cold water
- Not suitable for cleaning acrylic glass (PMMA)
- Apply solutions when fresh and use within 24 hours at the latest
- Some products may not be available in all territories
- Please talk to your customer service representative.



## ULTIMATE 35H

### Fields of Application



- All water-resistant surfaces e.g. plastic surfaces, glass surfaces, doors, window frames and heaters
- Water-resistant floor coverings
- Water-resistant materials
- Can be used on sealed wooden floors, safety tiles, porcelain stoneware tiles and ceramic tiles, brass, copper and most plastic surfaces

### Technical Data



- pH-value: pH 8 ± 1
- Product colour: blue
- Container:
  - 1 L bottle
  - 10 L canister
  - 200 L drum

### Application and Dosage



- Daily routine cleaning: 20-50 ml/10 L water
- Spray cleaning 50 ml/600 ml water

### Product Advantages-Properties



- Neutrat multi-purpose cleaner with fresh citrus scent
- Material-compatible
- Good cleaning effect
- Dries quickly without streaks
- Ideal for shiny surfaces
- Leaves brilliant shine
- Removes soiling from pencils, fett tips, ball point pens and tracing paper



- Always use cold water
- Not suitable for cleaning acrylic glass (PMMA)
- Some products may not be available in all territories
- Please talk to your customer service representative.



## ULTIMATE 45L

### Fields of Application



- All water-resistant surfaces e.g. plastic surfaces, glass surfaces, doors, window frames and heaters
- Water-resistant floor coverings
- Water-resistant materials
- Can be used on sealed wooden floors, safety tiles, porcelain stoneware tiles and ceramic tiles, brass, copper and most plastic surfaces

### Technical Data



- pH-value: pH 7 ± 0,5
- Product colour: blue
- Container:
  - 1 L bottle
  - 10 L canister
  - 200 L drum

### Application and Dosage



- Daily routine cleaning: 20-50 ml/10 L water
- Spray cleaning 50 ml/600 ml water

### Product Advantages-Properties



- Neutral multipurpose cleaner with fresh citrus scent
- Metaerial compatible
- Good cleaning effect
- Dries quickly without streaks
- Ideal for shiny surfaces
- Leaves brilliant shine
- Removes soiling from pencils, felt tips, ballpoint pens and tracing paper



- Always use cold water
- Not suitable for cleaning acrylic glass (PMMA)
- Apply solutions when fresh and use within 24 hours at the latest
- Some products may not be available in all territories
- Please talk to your customer service representative.



## ULTIMATE 312

### Fields of Application



- All water-resistant surfaces e.g. plastic surfaces, glass surfaces, doors, window frames and heaters
- Water-resistant floor coverings
- Water-resistant materials
- Can be used on sealed wooden floors, safety tiles, porcelain stoneware tiles and ceramic tiles, brass, copper and most plastic surfaces

### Technical Data



- pH-value: pH 11 ± 0,5
- Product colour: green
- Container
  - 1 L bottle, 5 L canister
  - 10 L canister
  - 200 L drum
  - 40 ml Layflat tubing

### Application and Dosage



- Daily routine cleaning 20-50 ml/10 L water
- Spray cleaning 50 ml/600 ml water

### Product Advantages-Properties



- Neutral multi-purpose cleaner with fresh citrus scent
- Material-compatible
- Good cleaning effect
- Dries quickly without streaks
- Ideal for shiny surfaces
- Leaves brilliant shine
- Removes soiling from pencils, felt tips, ballpoint pens and tracing paper



- Always use cold water
- Not suitable for cleaning acrylic glass (PMMA)
- Apply solutions when fresh and use within 24 hours at the latest
- Some products may not be available in all territories
- Please talk to your customer service representative.



# SANI FORCE F

## Fields of Application



- All acid-resistant materials and surfaces in wet areas and in swimming baths
- Sanitary china
- Stainless-steel surfaces

## Technical Data



- pH-value: pH 1± 0,5
- Product colour: red
- Container:
  - 1 L bottle
  - 10 L canister
  - 750 ml IBC container

## Application and Dosage



- Daily routine cleaning: 100 ml/10 L water
- Basic cleaning 1000 ml/10 L water
- Foam gun: 1:5 to 1:10 with water

## Product Advantages-Properties



- Dissolves stubborn dirt such as limescale, urine deposits, rust, scale, dirt, grease and soap residue
- Powerful, fast cleaning effect
- RK-listed
- Viscosity enables good adherence to vertical surfaces and thus a long reaction time
- Suitable for use with a single-disc machine



- Always use cold water
- Never apply to lime-bonded natural or artificial stone, aluminium, painted surfaces or chrome surfaces.
- Do not mix with chloric cleaners.
- Do not use on acrylic glass.
- Please pay attention to the manufacturer's instructions before using on plastic and fittings



## TURBO ALL

### Fields of Application



Alkali-resistant and water-resistant hard floor covering such as PVC, stone (unpolished), brick slabs and earthenware slabs.

### Technical Data



- pH-value:  $13,5 \pm 0,5$
- Product colour: Blue
- Container: 10 L canister

### Application and Dosage



- 1-31/10 l water
- Spread solution evenly over the floor and allow approx. 10 min contact time. Do not allow to dry. Then carry out basic cleaning with a single-disk machine or scrubbing dryer fitted with an appropriate pad. Remove dirt solution with a wet vacuum cleaner. Then rinse the floor thoroughly with plenty of clean water.

### Product Advantages-Properties



- Very good film-removing action
- Dissolves stubborn dirt
- For application in cleaning machines

- Highly alkaline
- Very good wetting properties
- With pleasant fragrance



- Always use cold water
- Check covering for colour fastness before application
- Not suitable for floors susceptible to alkalis, such as linoleum, rubber, open pore wood, cork and calciferous stone (e.g. marble and terrazzo)
- When being used in the automat, the tanks should be regularly cleaned and rinsed.





## TURBO ALL SUPER

### Fields of Application



- Alkali-resistant and water-resistant hard floor covering such as PVC, stone (unpolished), brick slabs and earthenware slabs

### Technical Data



- pH Wert: 13,5 + (0.5)
- Product colour: blue
- Container 10 L canister

### Application and Dosage



- 1-3 L/10 L water
- Spread solution evenly over the floor and allow approx. 10 min contact time. Do not allow to dry. Then carry out basic cleaning with a single-disk machine or scrubbing dryer fitted with an appropriate pad.
- Remove dirt solution with a wet vacuum cleaner. Then rinse the floor thoroughly with plenty of clean water

### Product Advantages-Properties



- Very good film-removing action
- Dissolves stubborn dirt
- For application in cleaning machines
- Foam-inhibited

- Highly alkaline
- Very good wetting properties
- With pleasant fragrance



- Always use cold water
- Check covering for colour fastness before application.
- Not suitable for floors susceptible to alkalis, such as linoleum, rubber.
- Open pore wood, cork and calciferous stone (e. g. marble and terrazzo)
- When being used in the automat, the tanks should be regularly cleaned and rinsed.



## SOFT 22

### Fields of Application



- Water-resistant, colour-fast textile coverings

### Technical Data



- pH-value: pH 7
- Product colour: Green
- Container:
  - 10 L bottle
  - 10 L canister

### Application and Dosage



- Work the liquid into a lather and clean with foam only. 1-1.5L/10 L water
- Single-disk machine with shampooing brush: 600-1000 ml/10 L water
  - Yarn pad method: 1 L/ 10 L water
- Spray cleaning solution onto the yarn pad and the floor. Clean with a single-disk machine with a yarn pad fitted. Vacuum after cleaning
- Carpet shampooing machine: 600-1000 ml/10 L water

### Product Advantages-Properties



- Dissolves dirt, fibre-deep and fabric-protective action
- Forms a dry, solid foam
- Crystallises dry
- Suitable for wet and dry shampooing
- Does not contain optical brightening agents
- Can be easily removed with a vacuum cleaner
- With pleasant fragrance
- Suitable for the yarn pad method





## SOFT 20

### Fields of Application



- Water-resistant, colour-fast textile coverings

### Technical Data



- pH-value: pH 7
- Product colour: Green
- Container:
  - 10 L bottle
  - 10 L canister

### Application and Dosage



- Work the liquid into a lather and clean with foam only, 1-1.5 L /10 L water
- Single-disk machine with shampooing brush: 600-1000 ml /10 L water
  - Yarn pad method: 1 L /10 L water
  - Spray cleaning solution onto the yarn pad and the floor. Clean with a single-disk machine with a yarn pad fitted. Vacuum after cleaning
  - Carpet shampooing machine 600-1000 ml/10 L water

### Product Advantages-Properties



- Dissolves dirt, fibre-deep and fabric-protective action
- Forms a dry, solid foam
- Crystallises dry
- Suitable for wet and dry shampooing
- Does not contain optical brightening agents
- Can be easily removed with a vacuum cleaner
- With pleasant fragrance
- Suitable for the yarn pad method





## SANI FORCE BASIS

### Fields of Application



- For all wef-room areas
- All acid-resistant materials and surfaces e.g. tiles washbasins and toilet bowls
- Ideally suitable for sanitary ware, chrome, stainless steel and aluminium surfaces wall and floor tiles
- Especially suitable for all verti

### Technical Data



- pH-value pH 2 ± 0,5
- Product colour: red
- Container
  - 1 L bottle
  - 10 L canister

### Application and Dosage



- Daily routine cleaning WCs, urinals: neat
- Daily routine cleaning- Sanitary surfaces: neat to 100 ml/10 L water
- Daily routine cleaning: 50-100 ml/10 L water
- Foam gun: 1:5 to 1:10 with water
- Foam spray cleaning 50 ml/600 ml water

### Product Advantages-Properties



- Easily dissolves limescale, dirt residue and soap residue
- Outstanding cleaning performance
- Immediate streak-free shine due to pearling off effect
- Viscosity enables very good adherence to vertical surfaces
- Hygienically fresh Strawberry-fragrance
- Suitable for application with foam



- Always use cold water.
- Never apply to lime-bonded natural or artificial stone, painted surfaces or damaged chrome surfaces
- Apply solutions when fresh and use within 24 hours at the latest.



## SANI FORCE-100

### Fields of Application



- For all wet-room and sanitary applications
- Acid-sensitive materials e.g. enamel, aluminium, brass, marble, shell lime etc.
- Water-resistant surfaces and floors
- For use in soft-water areas
- Waterless toilets

### Technical Data



- pH-value: pH 1 ± 0,5
- Product colour: red
- Container:
  - 10 L bottle
  - 10 L canister
  - 200 L drum

### Application and Dosage



- Daily routine cleaning: 50-100 ml/10 L water
- Foam gun: 1:5 to 1:10 with water
- Spray cleaning: 50 ml /600 ml water

### Product Advantages-Properties



- Deodorising fresh fragrance with active adour blocker
- Beading effect to dry streak-free without final drying
- Regular application prevents lime build-up
- Removes skin grease, soap residues and calcium soap quickly and effectively
- Material-friendly with good cleaning effect



- Always use cold water
- Not suitable for cleaning acrylic glass
- Apply solutions when fresh and use within 24 hours at the latest
- Changes or variations in clour do not impact on product quality.
- Some products may not be available in all territories
- Please talk to your customer service representative.



## ULTIMATE GLASS

### Fields of Application



- All water-resistant surfaces e.g. plastic surfaces, glass surfaces, doors, window frames and heaters
- Water-resistant floor coverings
- Water-resistant materials
- Suitable for use on sealed wooden floors, safety tiles, porcelain stoneware tiles and ceramic tiles, brass, copper and most of plastic surfaces

### Technical Data



- pH-value: pH 7 ± 0,5
- Product colour: blue
- Containe
  - 1 L bottle
  - 10 L canister
  - 200 L drum

### Application and Dosage



- Daily routine cleaning 20-50 ml/10 L water
- Spray cleaning: 50 ml/600 ml water

### Product Advantages-Properties



- Neutral multi-purpose cleaner with fresh orange scent
- Material-compatible
- Good cleaning effect
- Dries quickly without streaks
- Ideal for shiny surfaces
- Leaves brilliant shine
- Removes soil from pencils, felt-tip pens, ballpoint pens and carbon paper



- Always use cold water
- Not suitable for cleaning acrylic glass (PMMA)
- Some products may not be available in all territories
- Please talk to your customer service representative.



## ULTIMATE 50

### Fields of Application



- Alkali-resistant and water-resistant hard floor covering such as PVC, stone (unpolished), brick slabs and earthenware slabs

### Technical Data



- pH-value:  $13,5 \pm 0,5$
- Product colour: yellow
- Container: 10 L canister

### Application and Dosage



- 1-3 l/10 L water
- Spread solution evenly over the floor and allow approx. 10 min. contact time. Do not allow to dry. Then carry out basic cleaning with a single-disk machine or scrubbing dryer fitted with an appropriate pad. Remove dirt solution with a wet vacuum cleaner. Then rinse the floor thoroughly with plenty of clean water.

### Product Advantages-Properties



- Very good film-removing action
- Dissolves stubborn dirt
- For application in cleaning machines
- Foam-inhibited

- Highly alkaline
- Very good wetting properties
- With pleasant fragrance



- Always use cold water
- Check covering for colour fastness before application.
- Not suitable for floors susceptible to alkalis, such as linoleum, rubber, open pore wood, cork and calciferous stone (e.g. marble and terrazzo).
- When being used in the automat, the tanks should be regularly cleaned and rinsed.



 [www.tedcleaning.com](http://www.tedcleaning.com)  
 [info@tedcleaning.com](mailto:info@tedcleaning.com)  
 +44 7786 003125